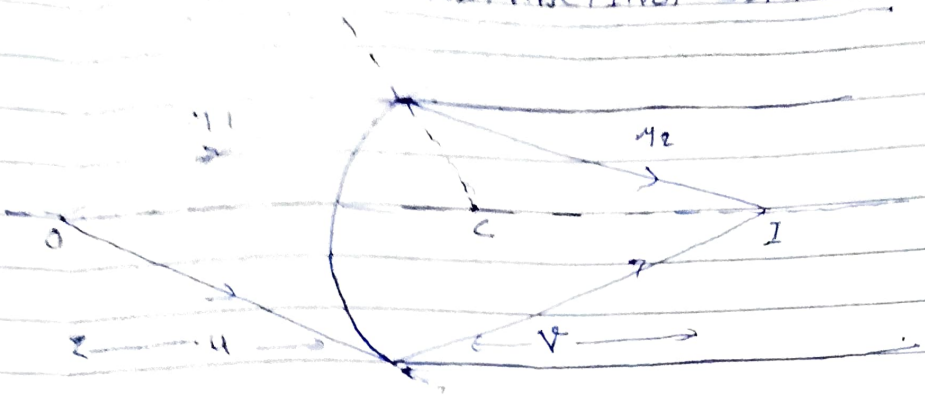
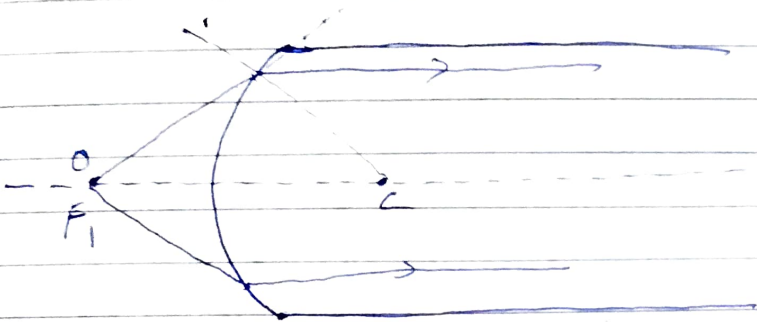


REFRACTION AT SPHERICAL SURFACE

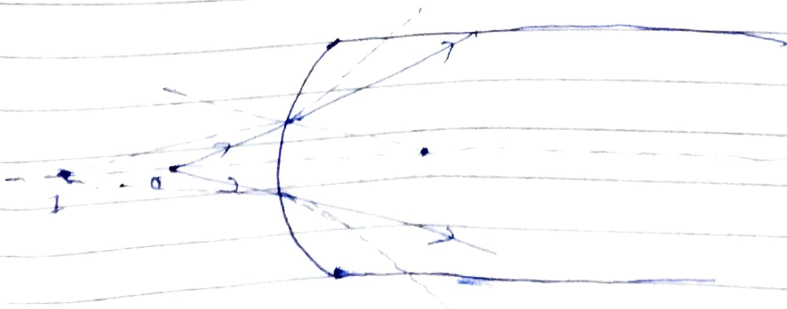
CONVEX REFRACTING SURFACE



When the object distance is large the rays passing through the refracting surface come together and form a real image.



If the object is moved closer to the surface to the position F_1 , the emergent light is parallel and the image forms at infinity.



if the object is brought near the
the rays diverge as they pass
the lens and are brought together
the left object is seen from
and virtual image is formed